

Introduction to Grant-Funded Fuels Reduction Project Options & Keys to Success

Yana Valachovic, UC Cooperative
Extension Forest Advisor

October 2022



What is the most important action you can take to help prepare of wildfire?



Image: Kelly Cornwall/U.S. Forest Service

California's Challenge

In the last 10 years in California.....

- 1 of every 8 acres has burned
- Over 43,000 structures have been destroyed
- 173 lives have been lost

Outline

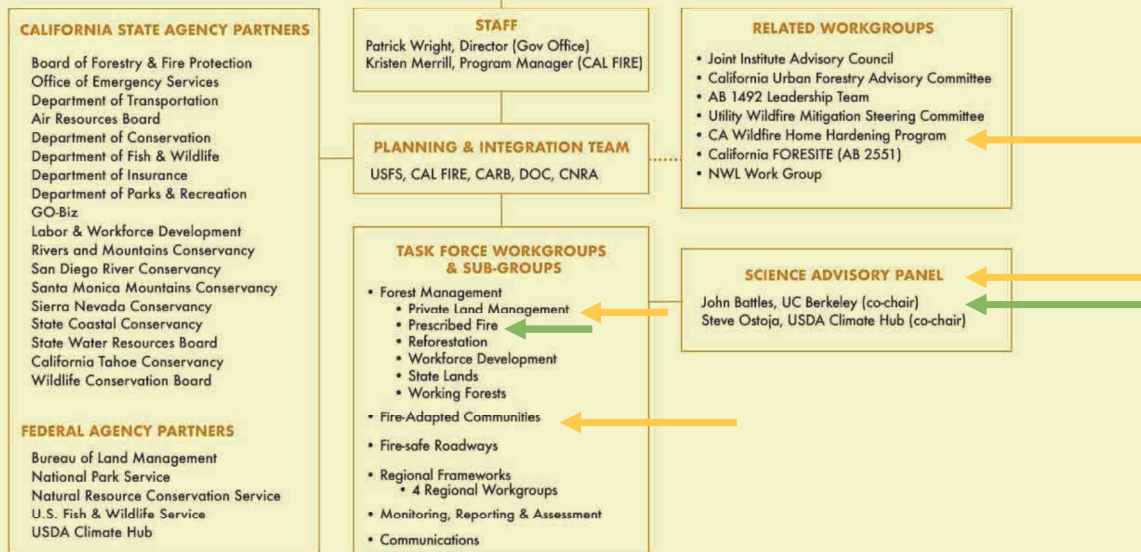
- State strategy for accelerating the pace and **scale** of forest management
- Partnership strategies
- Project permitting
- Project maintenance
- What is your long-term goal?



Wildfire Forest Resilience Task Force

EXECUTIVE COMMITTEE

STATE			FEDERAL		LOCAL		TRIBAL	
Jared Blumenfeld CalEPA	Joe Tyler CAL FIRE	Sam Assefa OPR	Wade Crowfoot CNRA (Co-chair)	Jennifer Eberlien USFS (Co-chair)	Richard Barhydt PSW Research Station	James Gore CSAC	Stacy Corless RCRC	Don Hankins Indigenous Stewardship Network



Four Goals

- **GOAL 1:** INCREASE THE PACE AND SCALE OF **FOREST HEALTH** PROJECTS
- **GOAL 2:** STRENGTHEN THE **PROTECTION OF COMMUNITIES**
- **GOAL 3:** MANAGE FORESTS TO ACHIEVE THE STATE'S **ECONOMIC AND ENVIRONMENTAL GOALS**
- **GOAL 4:** DRIVE **INNOVATION AND MEASURE PROGRESS**

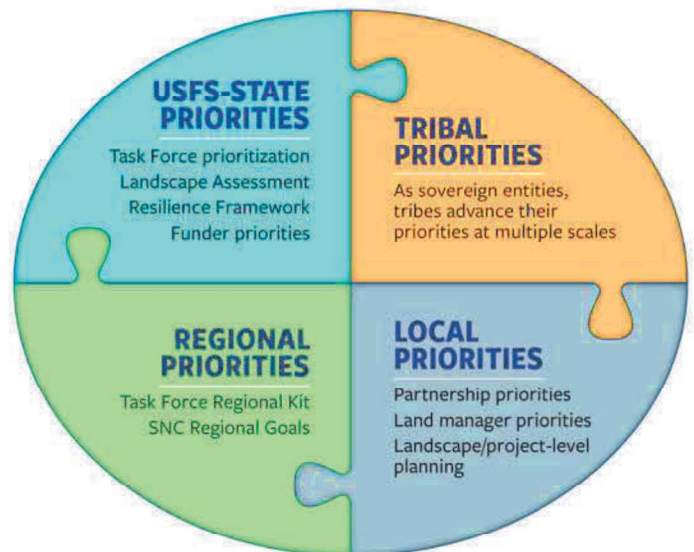


Image courtesy of Ryan Tompkins

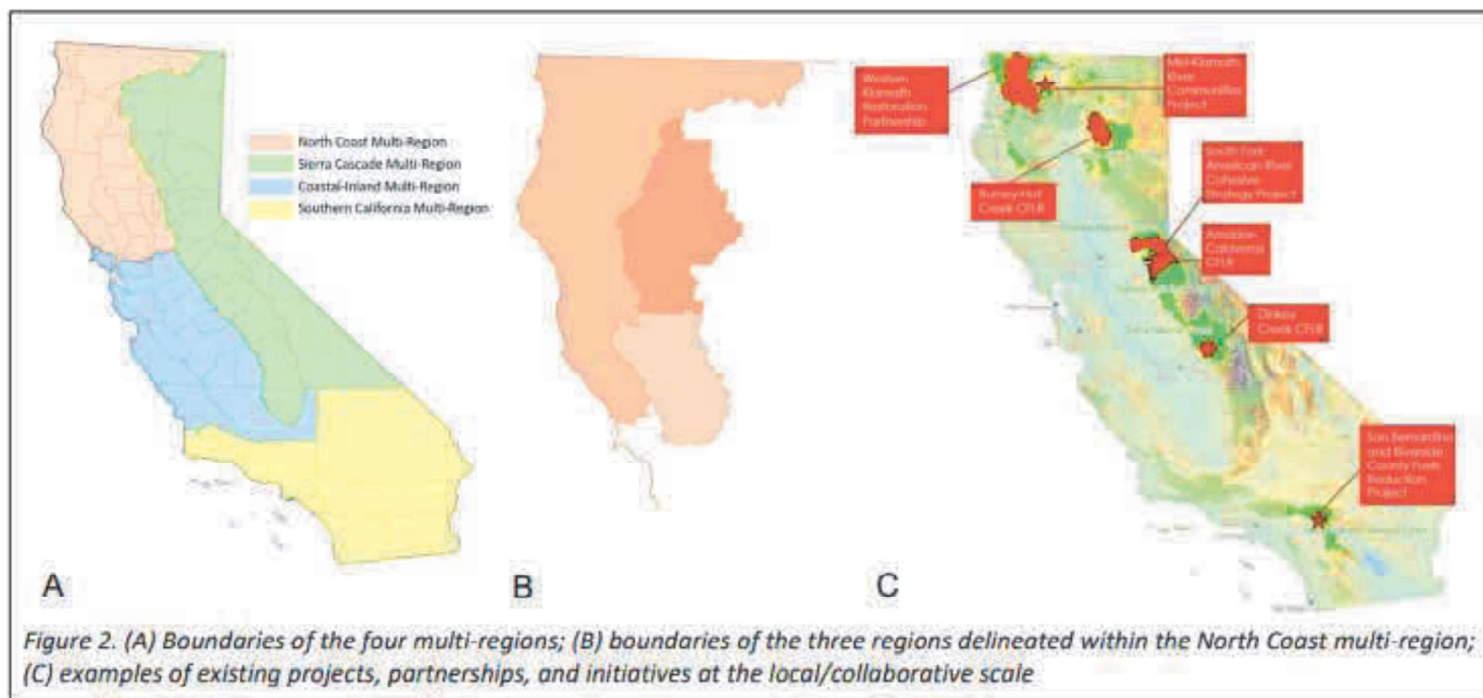
Enhancement of Regional Capacity

- State-wide mandates balanced with local priorities
- Recognize regional diversity and strategies

Landscape Grants Connect Priorities



Regional Approach



North Coast Resource Partnership- RFFC Program

Funded by Cap-and-Trade revenues through California Climate Investments,

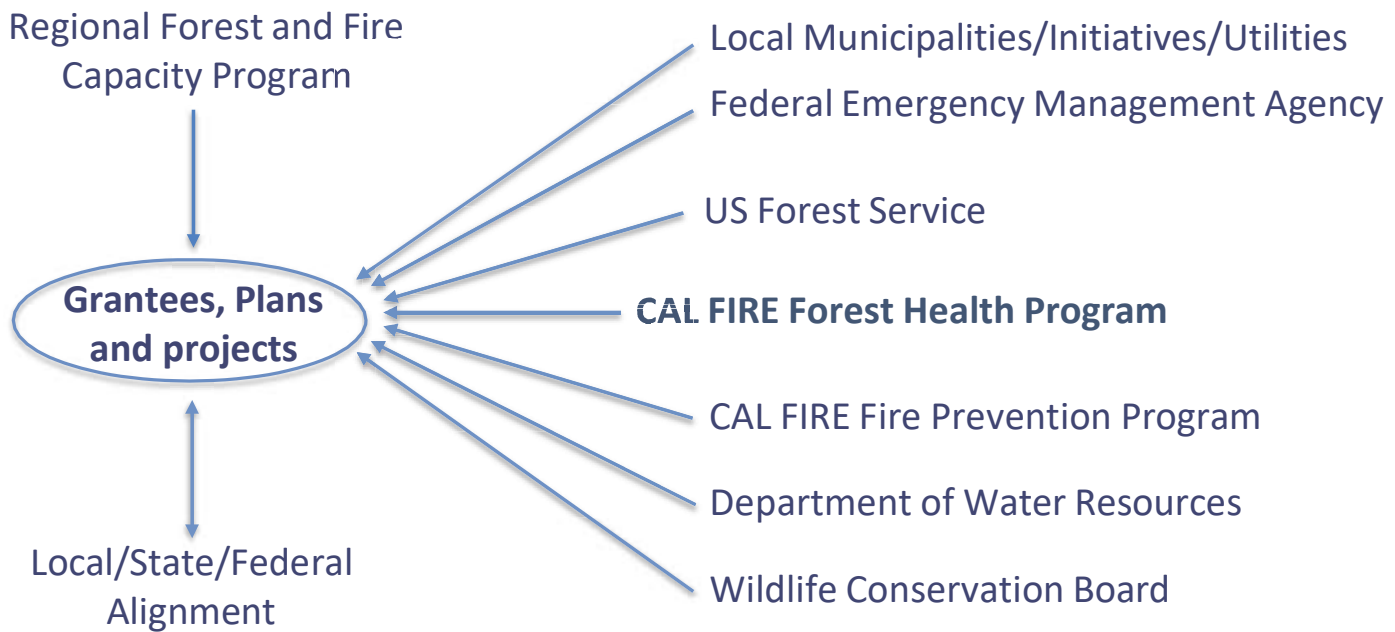
- Promote and support **collaborative planning** and implementation of **wildfire resiliency** and **forest health protection**, management, and restoration efforts at the landscape or watershed level

- Coordinate and integrate the management of wildfire resiliency and forest health protection, management, and restoration efforts at the regional scale

- Identify, prioritize, and implement forestry and wildfire protection projects that meet regional and statewide public safety, ecosystem, and public resource goals, and that are consistent with the **Forest Carbon Plan**.



RFFC Grantees Serving Multiple Agencies



Alignment of Resources

- Federal and State
- Metrics of progress
- Coordinate reforestation
- Bolster training and workforce development



Figure 1

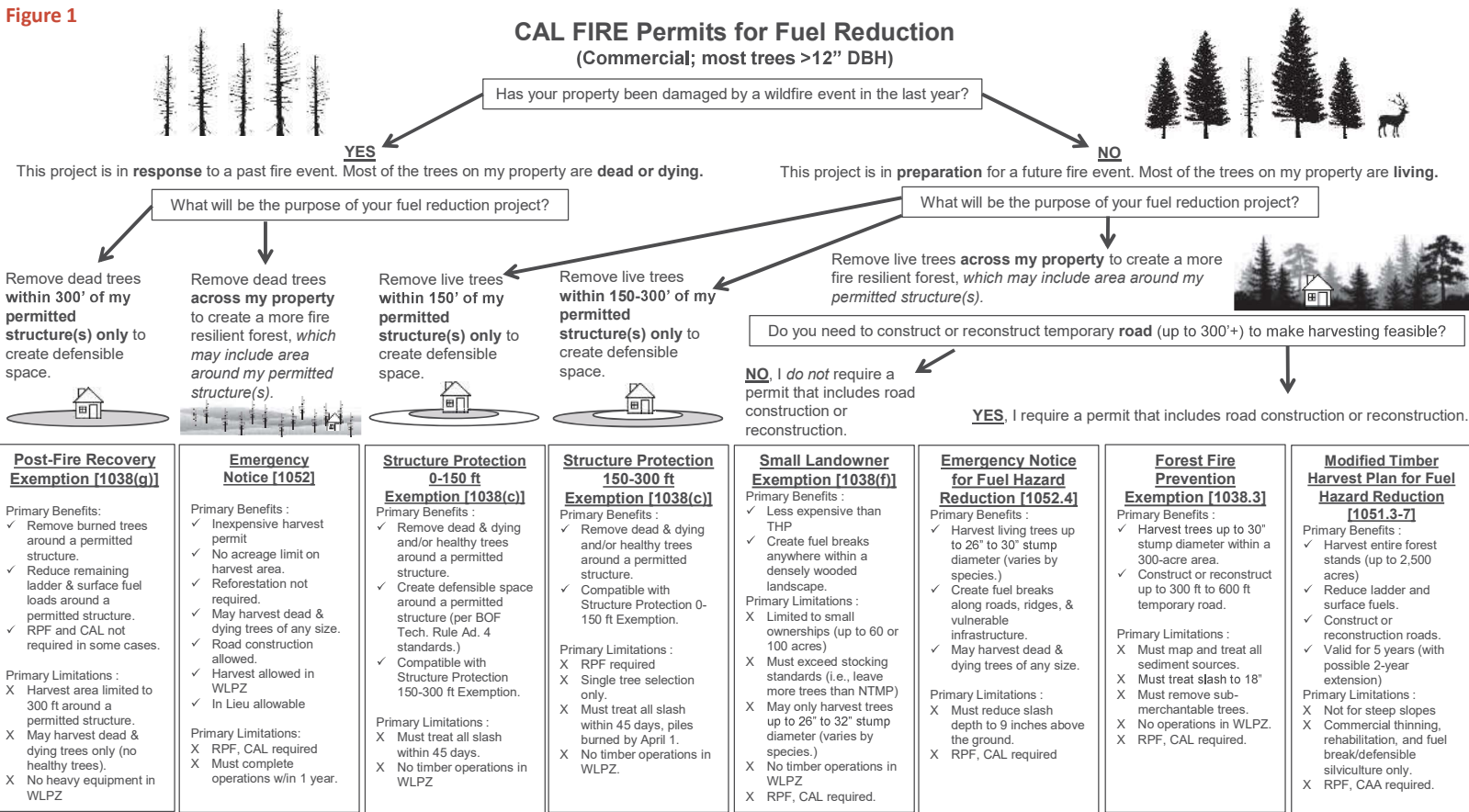
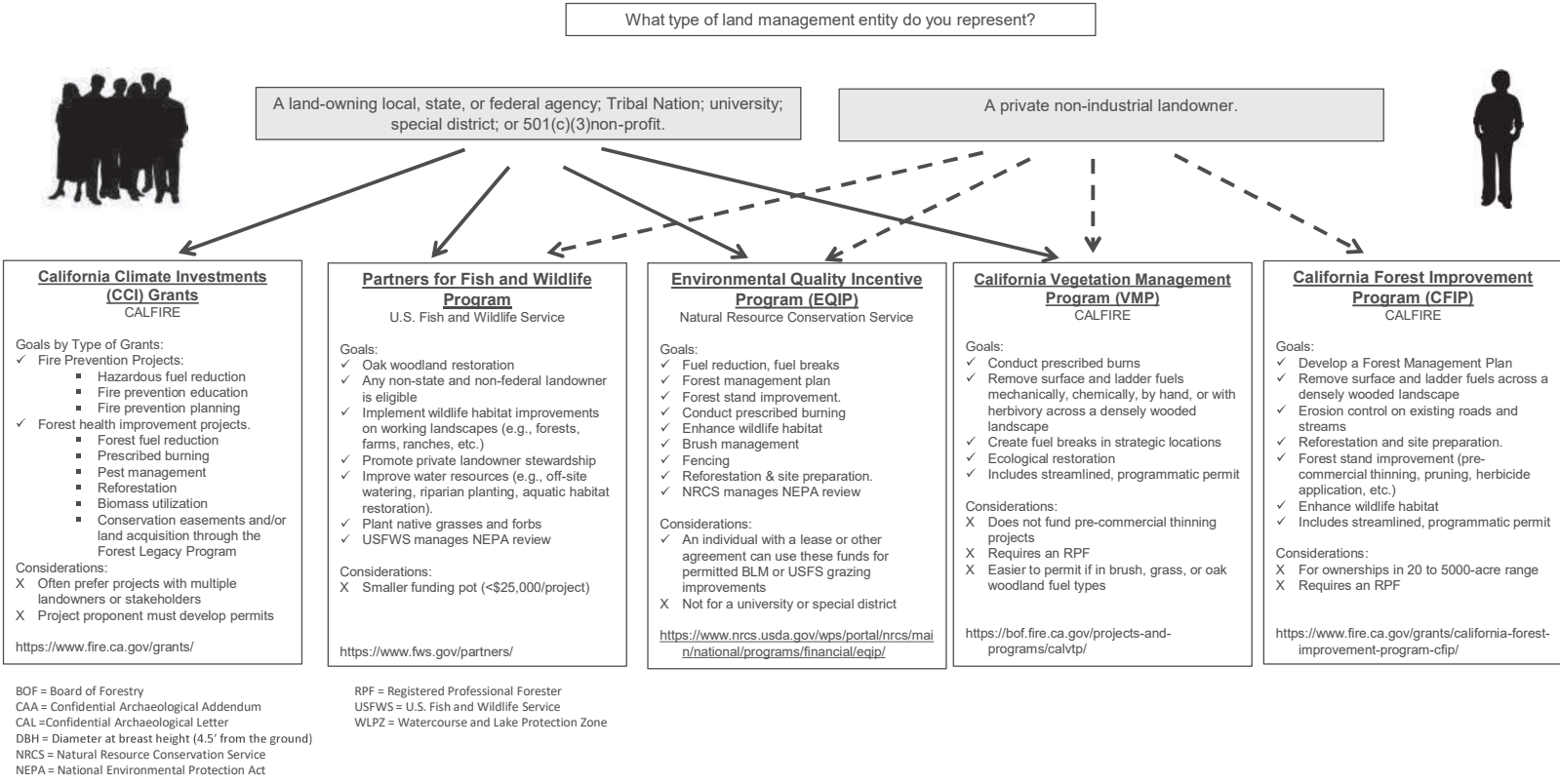


Figure 3

Non-Merchantable Fuels Reduction Projects (Grant or Financial Assistance; most trees <12" DBH or non-commercial species)



Permitting considerations- 30 % of project costs?

More Difficult

- < 100 feet from a watercourse
- Involve helicopters
- Road construction
- Unstable slopes
- Cultural resources
- Sensitive species present
- Within the coastal zone
- Close to park
- Remove trees > 48 inches

Easier to permit

- Away from sensitive areas
- Remove small diameter trees
- Do not require road upgrades
- Out of the breeding season
- Involve fewer landowners
- Do not mix ownership types (private and federal)
- Are post-emergency (fire, drought, or pest outbreak)



Tips for success

- Work with a consulting forester
- Permitting feasibility is essential
- Build a budget to include permitting from the start
- Start small and scale up



Maintenance and future work

- Plan for future entries
 - Who does the next entry?
 - What equipment will be used?
- Sprouting species grow back quickly
- Residual fuels can be a challenge



Vision for Fire Adaptation

What are your goals?

Measures of success?

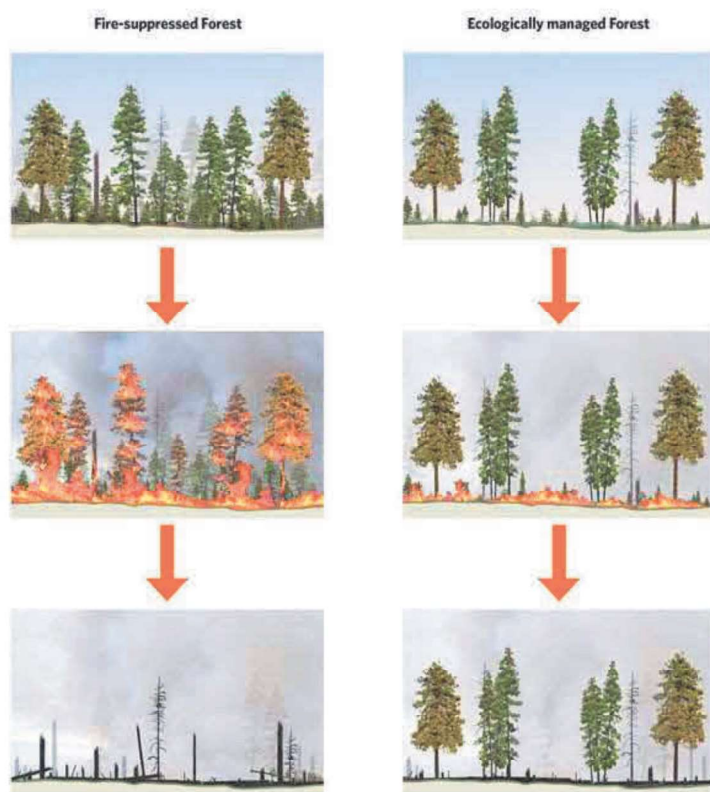


Image courtesy of the Nature Conservancy

August fire impacts on an oak restoration treatment



Treated

Encroached



AFTERMATH OF THE BOOTLEG FIRE Ecological Forest Restoration in Action: Aerial photography shows how different treatments moderated the impact of Oregon's 2021 Bootleg Wildfire. © Steve Rondeau, Klamath Tribe ¹

Facets of Fire Resiliency



Wildland management Fuel reduction, Rx fire, wood product markets



Open space and agriculture Buffers, safe zones



Infrastructure protection Utilities, water, hospitals, etc.



Land use planning Building codes, zoning



Fire resilient homes Construction, landscaping, defensible space



Weather forecasting and alerts



Fire response and evacuation Mutual aid, neighborhood-scale planning, signage



Rebuilding communities People, organizations, and infrastructure



Examples of Community Tools

